

# Bruckner's

## TRUCK & EQUIPMENT



## Butterfly Xpress LLC

### NAVIGATING THE ROAD TO SUCCESS

BUTTERFLY XPRESS' JOURNEY IN TRUCKING

PG 6

BRUCKNER LEASING OPPORTUNITIES

PG 2

TRUCK AND TRAILER SPECIALS

PG 3

PARTS SPECIALS

PG 11



BE SURE TO CHECK OUT THIS ISSUE'S PARTS SPECIALS!



# Bruckner Leasing

Contact the Bruckner Leasing Professional nearest you and learn first-hand the benefits Bruckner Leasing offers and how our leasing and rental options can improve your bottom line.



## FULL SERVICE LEASING

Comprehensive program with benefits that allow you to focus on your business - while we handle the trucks.

## COMMERCIAL RENTALS

From medium duty trucks to tractors, we can help you keep your business running smoothly.

## CONTRACT MAINTENANCE

Whether you have old or newer equipment, we have offerings ranging from Preventative Maintenance to Complete Fleet Service Solutions.



Amarillo  
Lubbock  
Odessa  
San Angelo  
Abilene  
Hobbs  
Call Shawn McLemore  
866-348-MACK

Dallas I-20  
Call Kenley Harper  
877-999-8078

Dallas Irving  
Call Morgan Halverson  
877-999-8082

Fort Worth  
Wichita Falls  
Call Stephen McCool  
866-350-MACK

NW Arkansas  
Lowell  
Pottsville  
Van Buren  
Call John Milligan  
479-782-8281

San Antonio  
866-279-8755

Kansas  
Wichita  
Salina  
Hays  
Garden City

**NOW INTERVIEWING**  
817-378-2338

Shreveport  
Monroe  
Call Shawn McCallon  
877-369-0906

Oklahoma City  
Tulsa  
Enid  
866-360-MACK

Albuquerque  
Farmington  
Call Jeff Stanfield  
877-284-4912

Denver  
Colorado Springs  
Greeley  
Call Kristin Wilson  
877-857-3196



# DAY CABS

## INVENTORY SPECIALS



### NEW 2024 MACK PINNACLE

MP8 505HP, mDrive HD, FA: 14.6K, RA: 40K on Air Ride, Rear Lockers, 3.25 Ratio, 225" WB, Holland Air Slide 5th Wheel, Leather Seats.

#63465  
Oklahoma City, OK

**PLEASE CALL**



### USED 2019 VOLVO VNR64T300

MP8 455HP, I-Shift, FA: 13.2K, RA: 40K, 197" WB, Collision Avoidance System, Adaptive Cruise, 3.08 Rears, 464,289 miles.

#A9002  
Monroe, LA

**\$59,500**



### NEW 2024 VOLVO VNX300

Cummins X15 605HP, Eaton Fuller 18 Spd, FA: 20K, RA: 46K on Volvo PRIMAAX, 3.91 Rears, Hendrickson 20K Steerable Pusher, 267" WB, Holland Severe Duty Air Slide Fifth Wheel, Wide Width Seats, Position Perfect Steering. Price includes FET.

#62415  
Fort Worth, TX

**\$242,646**



### USED 2014 PETERBILT 579

Cummins ISX 450HP, Eaton Fuller 10 Spd, 12K/38K on Air Ride, 3.42 Rears, 195" WB, Pintle Hook, P/W/L, 509,217 mi.

#A9168  
Ellensburg, WA

**\$49,950**



### NEW 2024 MACK MD6 SEPTIC TRUCK

Cummins ISB6.7 300HP, Allison 6 Spd, Troxell 1550 Steel Vac Tank, 450 Gal Lined Fresh Water Tank & 1100 Gal Waste Water Tank w/ Dual Inlets & A 2-Unit Aluminum Drop Down Carrier.

#61051  
Wichita Falls, TX

**\$138,127**



### USED 2015 MACK CHU613

MP8 445HP, mDrive, FA: 14.6K, RA: 46K on Air Ride, 225" WB, Fontaine Fifth Wheel, 436,234 mi.

#A9000P  
Hays, KS

**\$89,950**



### NEW 2023 HINO L6 MOVING TRUCK

Cummins 6.7L 260HP, 6 spd Allison 2500 RDS, 26' Morgan Moving van 109"x103" with swing doors at the rear and both sides, vertical e-track, putty & varnished floors & walls, Translucent Roof, 14ft Melcher ramp, 40"x20" tool box, 4ft pull-out platform at rear, diamond plate front radius.

#59907  
Albuquerque, NM

**\$131,420**



### USED 2017 VOLVO VNL64T300

D13 455HP, I-Shift, FA: 12.4K, RA: 40K, Disc Brakes, 197" WB, 462,038 mi.

#A9098P  
Pottsville, AR

**\$46,950**



### NEW 2024 MACK MD7 SNOW PLOW

MD7 with Gulf Highway Plow and inbox Salty Dog removable Sander by Buyers, heated plow headlights. Cummins ISB6.7 300hp, Allison 3000 RDS 6 Spd, Cloth/Vinyl interior with power locks, windows and heated power mirrors. 11R24.5 tires on Aluminum Wheels.

#62852  
Denver, CO

**\$195,475**

# INVENTORY SPECIALS

# SLEEPERS



### NEW 2024 VOLVO VNL760

D13 TC 455HP, I-Shift, Disc Brakes, VADA 2.0, Heated & Massage Leather Seats, Cab Parking Heater, Workstation, Inverter, Fridge, Double Bunk, TV & M/W Prep Kits, Position Perfect Steering Wheel.

#62378

Van Buren, AR

**PLEASE CALL**



### USED 2020 MACK AN64T70

MP8 445HP, mDrive, 221" WB, Fridge, Inverter, Cab Parking Heater, ThermoKing Tri Pac APU, 403,063 mi.

#A8181P

Farmington, NM

**\$49,950**



### NEW 2024 VOLVO VNL860

D13 500HP, I-Shift, Lane Departure Warning, Heated & A/C Leather Seats, Fridge, Inverter, Workstation, Cab Parking Heater, Infotainment System w/ Navigation, Position Perfect Steering Wheel.

#61726

Amarillo, TX

**PLEASE CALL**



### USED 2015 VOLVO VNL84T630

D13 455HP, I-Shift, FA: 13.2K, RA: 38K, 13.2K Steerable Pusher, 243" WB, Cab Parking Heater, 549,924 mi.

#A8398

Yakima, WA

**\$39,950**



### NEW 2024 VOLVO VNL860

D13 TC 455HP, I-Shift, Disc Brakes, 245" WB, Heated & AC Swivel Leather Seats, Fridge, Bunk Heater, Workstation, Inverter, Infotainment w/ Navigation, Backup Camera.

#62777

Salina, KS

**PLEASE CALL**



### USED 2020 VOLVO VNR640

D13 455HP, I-Shift, 13.2K/38K, 2.64 Ratio, 207" WB, Double bunk, Inverter, Cab Parking Heater, 348,571 mi.

#A9332P

Tulsa, OK

**\$74,950**



### NEW 2024 VOLVO VNL860

D13 TC 425HP, I-Shift, VADA 2.0, 13.2K/40K, 229" WB, Workstation, Cab Parking Heater, Double Bunk, APU, Fridge, Inverter, Position Perfect Steering Wheel. Price includes FET.

#62917

Dallas 120, TX

**\$202,500**



### USED 2019 KENWORTH T680

Cummins X15 500HP, Manual 13 Spd, 250" WB, Full Gauge Package, Electric APU, Fridge, 554,979 mi.

#A9414P

OKC, OK

**\$59,900**



### NEW 2024 MACK AN64T70

MP8 445HP HE, mDrive, 13.2K/40K on Air Ride, Disc Brakes, 215" WB, Collision Mitigation, Adaptive Cruise, Leather Seats, Fridge, Inverter, Bunk Heater. Price includes FET.

#63147

Hays, KS

**\$199,995**



# TRAILERS NEW AND USED

## INVENTORY SPECIALS



**NEW 2024 FONTAINE FLATBED**

Infinity 48' Forklift Trailer, Hendrickson Sliding Air Tandem, Grease-in hubs 5 year warranty, Exclusive RASR side rails - one piece routed aluminum, 12 sliding winches, Fontaine Factory Installed forklift kit with adjustable wheel stops that accepts most Princeton, Moffett, and Navigator brand lifts, seamlessly integrated counterweights at the front of trailer to improve handling while empty. Price includes FET.

**#63500**  
Odessa, TX

**\$61,600**



**NEW 2023 CTS ROCK MASTER END DUMP**

Rock Master 36' Half Round End Dump, Spring Suspension, 11R24.5 Tires on Steel Wheels. Price includes FET.

**#58160**  
Lubbock, TX

**\$58,295**



**NEW 2024 TROXELL 130 BBL**

(2) 130 BBL VAC Non-Code Trailers, Spring Susp, Steel Wheels, Full Length Hose Trays, Walkway. Price includes FET.

**#63647**  
Shreveport, LA

**\$76,975**



**NEW 2024 FONTAINE MAG55H**

55 Tons in 12-foot length. Pre-Fab for flip box and flip/spreader axle. 13HP Honda pony motor. 27' Clear Deck Length. Manual front approach ramps with risers. 2 lockable covered toolbox trays. Load bearing wheel covers. Chain lift front axle, air lift rear axle. Outer aluminum wheels. Price does not include 4th axle.

**#61076**  
Wichita, KS

**\$128,500**



**NEW 2024 SMITHCO SIDE DUMP**

2024 SmithCo 40' Side Dump: 34' Tub built with 1/4" AR400. 23 Yard Capacity Water Level, 30 Yard Heaped. AERO Mesh Electric Tarp, Ridewell RW260 Air Ride Suspension. 11R24.5 Tires on Aluminum outside wheels, steel inners. Remote grease banks for fifth wheel, Both cylinder ends for easy maintenance. 5" Cylinders. Price includes FET.

**#63759**  
Hobbs, NM

**\$72,880**



**NEW 2023 FONTAINE DROP DECK**

Velocity 48' Drop Deck with Wide Spread Air Hendrickson AANL23K Intraax Air Ride Suspension, 22.5 tires mounted on Steel wheels. Price includes FET.

**#57929**  
Fountain, CO

**\$45,920**



**2023 CTS SCRAPMASTER END DUMP**

Frameless Demolition Scrap Trailer 40' X 100" Sides. Hutch Center Point suspension. 11R24.5 Sumitomo Tires on Steel Wheel. Mountain Electric Tarp. Swing Open Barn Door. Built Tough in the USA with AR450 Steel. Price includes FET.

**#59245**  
Tye, TX

**\$86,240**



**NEW 2024 FONTAINE TRAVERSE**

Fontaine Traverse Hydraulic Tail Trailer w/ 10.5° ramp angle, 40 ton capacity, On Board Digital Scale. 35" Loaded Deck height. 14' ramp length (10' main deck + 4' flip) Heavy Duty 18,000-lb winch. Dual Controls (Both Sides of Trailer). Price includes FET.

**#61078**  
San Antonio, TX

**\$112,000**



**USED 2013 SPECIALIZED XL**

10', 3+2, modular, low pro 42' deck

**#A7338P**  
Enid, OK

**\$175,000**

# NAVIGATING THE ROAD TO SUCCESS

BUTTERFLY XPRESS' JOURNEY IN TRUCKING



Bill and Karen Barhite of Butterfly Xpress insist on only buying new equipment and purchasing extended warranties to keep repair costs at a minimum.

## NAVIGATING THE ROAD TO SUCCESS: BUTTERFLY XPRESS' JOURNEY IN TRUCKING

Butterfly Xpress (BFX) stands as a testament to the entrepreneurial spirit and resilience of owner-operators Bill and Karen Barhite. With a fleet of 10 trucks, BFX may be small, but its impact on the trucking industry is significant.

### A JOURNEY ROOTED IN EXPERIENCE

Bill Barhite, with over three decades of trucking experience, embarked on his journey in 1992 with Schneider. After a decade and a fruitful stint at U.S. Xpress, Bill, alongside his wife Karen, ventured into entrepreneurship by founding Butterfly Xpress in 2013. Their dedication to the business and their drivers is evident as they actively manage the fleet, physically continue to drive themselves and move their company forward.

Their journey into entrepreneurship was sparked by a shared love for Volvo Trucks, a brand they had come to admire during Bill's two-decade career as a driver. Little did they know that this passion for Volvo would pave the way for a thriving family-owned and operated trucking business.

---

**"We absolutely love Volvos. That truly is why we started this company. We never thought that this was going to be our path or direction, but we fell in love with Volvo Trucks driving them for other carriers, and we loved the sleepers."**

**Bill Barhite**, Butterfly Xpress Owner

---



**“We have a nice relationship with all the Bruckner’s folks and have made good friends with the shop people. Aaron, Danielle, and Johnny are very supportive and are great to work with. The last truck we purchased was a beautiful red 2024 VNL 860 about six months ago.”**

**Bill Barhite, Butterfly Xpress Owner**

The story unfolds with a chance encounter with a 1998 Volvo 770 truck sitting behind a dumpster. Bill, inspired by his devotion to the Volvo brand, saw an opportunity. Acquiring the truck for \$5,000 marked the humble beginning of Butterfly Xpress, despite the initial challenges of repairing the aged vehicle. Determined to avoid future repair struggles, Bill became an advocate for purchasing new equipment and investing in extended warranties, ensuring the longevity and reliability of the fleet.

“My wife and I took authority over this business October 15, 2013. Really, it’s Volvo Truck’s fault. I had been a driver for over twenty years. I had always wanted to be an owner operator but never dreamed that it would actually come to be,” says Bill. “We absolutely love Volvo’s. That truly is why we started this company. We never thought that this was going to be our path or direction, but we fell in love with Volvo Trucks driving them for other carriers and we loved the sleepers. Hands down, Volvo is the best brand out there and for many reasons is the superior truck by far out there in the market.”

“The company that we were driving for was switching out their fleet to another brand. They were small sleepers and we did not care for them at all, so we decided to switch gears professionally. We got out of driving, and I started learning another side of the trucking business acting as a manager for a fuel tanker. One day, I happened to drive by a dumpster and saw this stupid old Volvo truck sitting there behind it. It was a 1998 Volvo 770 and I wondered to myself how much it would cost me to buy it. You see, it is Volvo’s fault. Starting out with that first old truck was brutal in repair costs. For that reason, I insist on only buying new equipment and purchasing extended warranties. I am a huge proponent for warranty coverage,” adds Bill.



The connection with Bruckner's, facilitated by Danielle Riley, Bruckner's of Amarillo Finance Manager, became a pivotal moment. Meeting truck salesman Aaron Barton and General Manager Johnny Puckett solidified a partnership that led to the acquisition of a 2016 Volvo 780, subsequently expanding the fleet with additional trucks and drivers. Today, the entire Butterfly Xpress fleet proudly consists of only Volvo and Mack trucks, a testament to the enduring relationship with Bruckner's.

### FROM CHALLENGES TO TRIUMPHS

The early years of BFX were marked by challenges, with Bill recounting the struggle to secure partnerships with brokers. However, the fleet's resilience prevailed, and by 2019, they had nine leased owner-operators. A setback occurred when an unfortunate incident resulted in a fleet reduction to four trucks. Undeterred, Bill strategically invested in five used Volvo VNL 860s in 2020, positioning BFX for growth.

### STEADY GROWTH AND DEDICATED SERVICES

Recognizing the cyclical nature of the trucking industry, Bill shifted focus from spot market freight to dedicated services. The move paid off as BFX secured accounts with trusted brokers, including a significant partnership with Royal Caribbean to supply cruise ships on the West Coast. Such dedicated services provided stability amid market fluctuations and positioned BFX for long-term success.

BFX's commitment to its owner-operators extends beyond providing a truck. The lease-purchase program, termed a capital lease, allows operators to own the truck outright at the end of the lease. This approach, coupled with a generous pay structure and additional benefits, fosters loyalty among drivers. The fleet's low turnover rate is a testament to the positive relationships cultivated by BFX.

Navigating the challenges of market fluctuations, BFX aims to stabilize its operations further. Despite the recent downturn, Bill envisions reaching a fleet size of 15 trucks, allowing him and Karen to step back from driving and focus on managing the business exclusively. The fleet's dedication to fair pay and transparent business practices sets it apart in the competitive landscape.

### PAVING THE WAY FORWARD

As a semi-finalist in Overdrive's Small Fleet Championship, Butterfly Xpress exemplifies the spirit of small businesses making a big impact. With a vision for the future and a

commitment to its drivers, BFX continues to navigate the roads of the trucking industry, proving that success is not solely measured by fleet size but by the strength of relationships and a steadfast commitment to excellence.

"We have a nice relationship with all the Bruckner's folks and have made good friends with the shop people. Aaron, Danielle, and Johnny are very supportive and are great to work with. The last truck we purchased was a beautiful red 2024 VNL 860 about six months ago." Bill continues.

"Our company core value is to continue to bring on additional owner/operators and grow our operation," shares Bill. "We can proudly say that we have had no accidents except for a few deer as is to be expected. We are completely family owned and operated and plan to keep it that way but do wish to increase our fleet size."

A commitment to Christian values shapes Butterfly Xpress' core principles. The company exclusively hires million-mile drivers, emphasizing safety and experience. The family-owned and operated nature of the business fosters a sense of unity and reliability. Despite the tumultuous market conditions, Butterfly Xpress maintains stability with dedicated customers and diverse routes, spanning all forty-eight states. Notably, the company runs a dedicated route hauling apples from Washington and operates a northeast division with three trucks for Tyson, ensuring drivers are home every night. Beyond the roads, Butterfly Xpress takes pride in its philanthropic endeavors and community involvement. Their notable achievement of winning the Overdrive National Fleet Championship stands as a testament to their commitment to excellence. Their journey, loyalty to the Volvo brand, and a commitment to quality service, continues to unfold for Butterfly Xpress, leaving an indelible mark on the trucking industry.



In the true spirit of "paying it forward," Butterfly Xpress has jumped at the opportunity to serve in times of need by transporting donations such as non-perishable food, bath and bedding supplies, towels, air mattresses, diapers, board games and other supplies in areas struck by hurricanes and severe flooding.





# POWER ON.

**Bruckner's**  
TRUCK & EQUIPMENT

The Hino Trucks' conventional models have been the fastest growing medium duty trucks for years. It started with great aerodynamics, functionality, durability, and has continued to develop their telematics services, Hino Edge, which is among the best telematic service in the industry. The Hino Trucks L Series sports an automotive grade interior, a host of new advanced safety equipment, and larger cab configurations for more versatility than ever before. Available in day, extended, and crew cab configurations Hino Trucks L Series trucks are ideal for applications ranging from 23,000 to 33,000 lbs. GVWR. - POWER ON.



Call Bruckner's of Lowell at 479.770.6040 for more information



**BTE OF IRVING**  
800.634.5619  
1601 E. State Hwy 356  
Irving, TX 75060

**BTE OF PHOENIX**  
602.278.9227  
2650 N. 32nd Ave  
Phoenix, AZ 85009

[btebody.com](http://btebody.com)



Swaploader SL-212 hoist, 20K lift capacity, can handle containers 12'-14', adjustable hook 36"-54" hook height, US Tarp single stage gantry assembly with 5-spring aluminum arm kits, work lights, wireless remote. Mack MD6 has Cummins ISB 6.7 engine, Allison 2500 RDS 6-speed transmission.

**\$147,250<sup>00</sup>**

PARTS | SERVICE | EQUIPMENT SALES



## BRUCKNER FINANCE AND INSURANCE PROFESSIONALS



Scan the QR code to utilize our new convenient credit application process!

New truck financing | New trailer financing

Used truck or trailer financing

Sub-Prime and Last chance financing for buyers with damaged or new credit needs

Large repair financing | Specialty equipment financing

**(877) 593.0325**

## HEAVY HAUL TRAILERS

AVAILABLE AT BRUCKNER'S OF ENID



Oversized Heavy-Haul Specialty Trailers  
Stock # A7335P-A7339P

**Trevor Charles**, Truck and Trailer Sales  
(580) 234-0043 | (580) 554-0310 cell  
5913 E. Owen K. Garriott Rd. | Enid, OK 73701

**\*End of Fiscal Year Rapid Reduction Prices!\***

# YOUR ONE STOP TRAILER SOURCE

FROM 30-TON DOUBLE DROPS TO 90-TON 13 AXLE RIGS, WE CAN HELP YOU MOVE YOUR LOAD.



Steel Dump Trailers | Steel Pup Trailers | Aluminum End Dumps | Flats and Drops | Steel and Aluminum Heavy Haul | Refuse / Roll-Off | Tankers - Steel Non Code | Tankers - Stainless Code | Tankers - Aluminum



# TARP SYSTEMS



## ARM ASSEMBLY DRIVER SIDE

HR4766L

\$656.34



## ARM ASSEMBLY PASSENGER SIDE

HR4766R

\$656.34



## 108" ROLLER

H7002C

\$613.84



## ARM PIVOT PIN KIT

A3881KIT

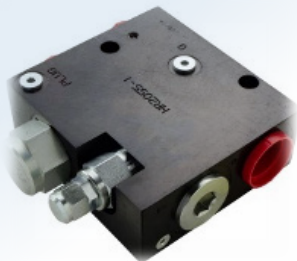
\$70.95



## FLOW DIVERTER

HR2055-1

\$516.65



## 3 SPOOL VALVE

HR4535A

\$714.00



## MOUNTING BRACKET DRIVER SIDE

HR4762A

\$1,316.79



## MOUNTING BRACKET PASSENGER SIDE

HR4761A

\$1,316.79



# WHEEL ENDS



## ROAD CHOICE® REMANUFACTURED BRAKE KITS



### ROAD CHOICE® HIGH VALUE

- Excellent value at an economical price
- Good wear and consistent performance

ROAD CHOICE HIGH VALUE HV20 —

ROAD CHOICE HIGH VALUE HV23 —

ROAD CHOICE HEAVY-DUTY HD20 —

ROAD CHOICE HEAVY-DUTY HD23 —

### ROAD CHOICE® HEAVY-DUTY

- Performs in higher temperatures with less fade
- Improved wear characteristics
- Lower total cost of ownership

Economy-grade friction delivering excellent value

Economy-grade friction delivering excellent value

Affordable heavy-duty-grade friction with excellent wear

Affordable heavy-duty grade friction with excellent value for heavy-duty applications

### ROAD CHOICE® RSD

#### ROAD CHOICE® RSD12 & RSD20

- Road Choice RSD linings are a premium grade friction certified to exceed the 2011 Reduced Stopping Distance (RSD) Phase 1 regulations.
- Road Choice RSD linings exhibit low wear, and fewer replacements means lower total cost of ownership.
- Road Choice RSD is available in a wide range of applications to cover all your brake shoe requirements.

## ROAD CHOICE® AUTOMATIC SLACK ADJUSTERS



ROAD CHOICE PART NUMBER	INDUSTRY SERVICE NUMBER	DESCRIPTION
SLK1140	AS1140	Gunite Style ASA for steer, drive applications
SLK1141	AS1141	Gunite Style ASA for drive applications
SLK1172	AS1172	Gunite Style ASA for steer, drive, trailer applications
SLK1173	AS1173	Gunite Style ASA for drive applications

## ROAD CHOICE® AIR DISC BRAKE CALIPERS



PART NUMBER	PRIMARY APPLICATION
ADB22512RRH	Freightliner
ADB22512RLH	Freightliner
ADB22512ARH	Paccar, Volvo, Mack, Navistar
ADB22512ALH	Paccar, Volvo, Mack, Navistar

## ROAD CHOICE® AIR DISC BRAKE PADS



### ADVME225L410

#### Road Choice Air Disc Brake Pad Set

FMSI : D1370  
 Model : Meritor EX+L410  
 Suitable For : Line Haul  
 Weight (kg) : 7.95  
 Warranty : 12-months, no cores



### ADVBX1369

#### Road Choice Air Disc Brake Pad Set

FMSI : D1369  
 Model : Bendix ADB22X/SK-7  
 Suitable For : Line Haul, Refuse, Trailer  
 Weight (kg) : 8.89  
 Warranty : 12-months, no cores

## ROAD CHOICE® HAND-INSTALLED WHEEL SEALS



ROAD CHOICE PART NUMBER	X - Ref
SEA370025	46305, 370025A, 372-7097
SEA370003	47691, 370003A, 392-9131
SEA370001	35066, 370001A, 382-8036

## ROAD CHOICE® HEAVY-DUTY WHEEL BEARINGS



SET NUMBER	CONE NUMBER	CUP NUMBER
BRGSET401	BRG580	BRG580
BRGSET402	BRG582	BRG572
BRGSET412	BRGHM212047	BRGHM212011
BRGSET426	BRG47679	BRG47679

**Please speak with your Bruckner Sales Representative for parts numbers not listed here.**



# TRAILER PARTS



SCAN TO WATCH STEMCO TRIFECTA YOUTUBE VIDEO



## STEMCO TRIFECTA TRAILER HUB

with tapered spindle  
7843-4530243

\$349.00



## STEMCO TRIFECTA TRAILER HUB

with parallel spindle  
7843-4530223

\$359.00



## AIR SPRINGS

8050..... \$92.99

9270..... \$77.05

8709..... \$71.11

8091..... \$81.14

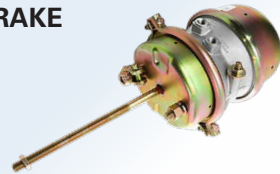
Ask your Bruckner Representative about volume pricing and availability.



## STANDARD BRAKE CHAMBER

S-16987 3030

\$44.00



## TRAILER SHOCKS

66634..... \$34.25

65419..... \$55.45

66886..... \$38.86

66893..... \$34.28



## EQUALIZER BEAM W/BUSHING

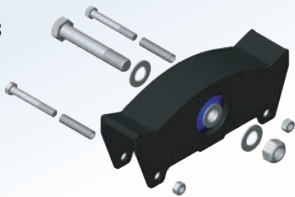
Hutchens PN: 16158-01  
H9700; H9600 Trailer Four Spring  
(42-1/2"-49" axle spacing)

ATRO PN: EQ53-35158  
Fabricated

\$94.36

ATRO PN: EQ53-35001  
Cast

\$143.44



## EQUALIZER BEAM W/BUSHING

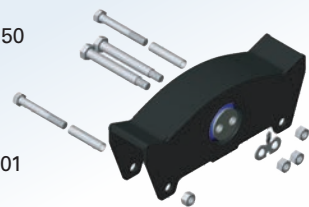
Hutchens PN: 750-03H7600;  
H7650; H7700 Trailer Four Spring  
(49" axle spacing)

ATRO PN: EQ53-35250  
Fabricated

\$71.80

ATRO PN: EQ53-35701  
Cast

\$117.50

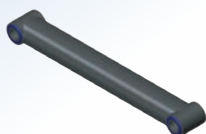


## TORQUE ROD, FIXED LENGTH

Hutchens PN: 715-00H/CH 7700/9700  
Trailer Four Spring  
Length: 19-1/4" c-c

ATRO PN: TR53-41500

\$41.11



## TORQUE ROD, ADJUSTABLE

Hutchens PN: 713-05H/CH 7700/9700  
Trailer Four Spring  
Length: 19-1/4" c-c

ATRO PN: TR53-45305

\$58.06



# TURBOCHARGERS



## TURBOCHARGERS FOR ALL MAKES

AGRICULTURE, OFF-HIGHWAY,  
MARINE, RAILROAD, OIL AND GAS,  
GENERATORS AND MORE

- All VGT model turbos available as complete & calibrated
- Custom rebuilding on hand to find applications
- ISO9001-2015 Certified
- 1-year, unlimited mile/ hour nationwide warranty



### CUMMINS

X15 | ISX | ISL | ISM | ISB



### MACK AND VOLVO

D11 | D13 | MP7 | MP8



### DETROIT

DD13 | DD15 | SERIES 60



### PACCAR

PX7 | PX9 | MX11 | MX13





# ALL-IN-ONE KITS

## PHILIPS

### THE PHILLIPS SOLUTION: QWIK-CHANGE™ PAK



#### Power Air Kit PAK

All-in-one kit for back of cab

Factory installed anodized gladhands

Grips mounted in place

HD Springs (2) with QWIK Clamp

Eliminates substitutions

Single 15' Part Number

Best opportunity for full life cycle



PART #	DESCRIPTION
30217429	15' QWIK-CHANGE™ Pak Kit
1181120	12 Ft. Air Line - Red & Blue Rubber
1181150	15 Ft. Air Line - Red & Blue Rubber
17180	Hose Holder - Qwik-Clamp
171481	QWIK-CHANGE™ Tracker Spring Kit, 20.5" Extra heavy duty spring, with QWIK-CLAMP™
171482	QWIK-CHANGE™ Tracker Spring Kit, 25" Extra heavy duty spring, with QWIK-CLAMP™
1200823	Straight mount, emergency, red, Anodized, 1/2" female pipe thread
1200623	Straight mount, service, blue, Anodized, 1/2" female pipe thread
801162	Red (emergency) polyurethane gladhand seals
801161	Blue (service) polyurethane gladhand seals



**ANODIZED  
GLADHANDS  
WITH LARGE  
RUBBER  
GRIP**



**QWIK-CLAMP™  
FOR CABLE  
ADJUSTMENTS  
IN SECONDS**



**QCP (QUICK  
CHANGE  
PLUG) WITH  
CABLE  
GUARD**



**25" EXTRA  
HEAVY-DUTY  
SPRINGS**

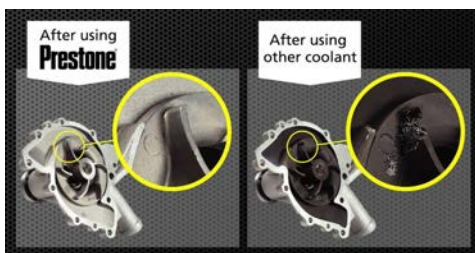
# ANTIFREEZE / COOLANT



Prestone® has been the trusted name for exceptional vehicle protection for over 90 years. Since 1927, when we pioneered automobile antifreeze/coolant, Prestone® has helped people defy the damaging effects that time and harsh weather conditions can have on their vehicles. Particularly with increasingly complex modern automobiles, we are committed to engineering the right product for each person's need.

## Introducing

**Heavy Duty Coolant** that **Protects Your Engine** instead of Corroding It



**The #1 Reason for Roadside Repair is Cooling System Parts Failure\***

**COMMAND EXTENDED**

4771-AFC11100F  
RED-50/50  
Gallon

Single **\$8.43**      Case **\$8.12**

**COMMAND EXTENDED - NITRITE FREE**

4771-AFC13100F  
RED-50/50  
Gallon

Single **\$7.75**      Case **\$7.46**

**WINDSHIELD WASHER FLUID**

4771-AS658  
Delux 3-in-1  
6 per case

Single **\$4.88**



**SCAN TO WATCH**  
**Prestone Command Heavy Duty Cor-Guard™**  
**YouTube Video**





# BATTERIES



## SUSTAINABLE SINCE DAY ONE BATTERIES FOR ALL MAKES AND MODELS

<b>MVL31X</b> CCA 925	<b>\$90.97</b>
<b>M311000</b> CCA 1000	<b>\$99.97</b>
<b>V31HC730</b> Dual Cycle Battery	<b>\$111.21</b>

Prices good through February 2024 with good core exchange.



Since day one, East Penn has made safe recycling an everyday practice. East Penn opened its doors as a battery rebuilding company almost three quarters of a century ago. Today, the company has never stopped building on its expertise, infrastructure, capabilities, and commitment. This continuous commitment has made the company the most progressive manufacturer in environmental protection and technologically advanced battery recycler throughout the entire industry.

The centerpiece of East Penn's commitment to the environment can be found in its product stewardship principles that include a continuous product life cycle approach. At our state-of-the-art recycling facility, East Penn processes approximately 30,000 batteries per day. Its computer-controlled, closed-loop system, co-located with its manufacturing facilities, recycles virtually 100 percent of each spent battery received for processing. Each of the three major battery components (lead, plastic, and acid) are safely recycled and used in making new energy storage devices.

In seven remarkable decades, East Penn has grown from a one-room shop with a product line of five automotive batteries to one of the world's leading battery manufacturers with over 450 product designs, and hundreds of awards for manufacturing and environmental excellence.



**East Penn completely recycles over 30,000 batteries a day!**



# USED TRUCK PARTS



## EXTENSIVE SUPPORT FOR ALL YOUR TRUCKS!

New, Used, Remanufactured, Reconditioned, Recycled



**ENGINES  
TRANSMISSIONS  
DIFFERENTIALS  
HOODS  
CABS**

**ALL MAKES RECYCLED PARTS**  
*AVAILABLE AT BRUCKNER'S*



# DEDICATED TO YOUR UPTIME

MULTIPLE LOCATIONS ACROSS 8 STATES



Bruckner's represents the only truck manufacturers that assemble 100% of their trucks, engines and transmissions in the US

## TEXAS

### AMARILLO

(866) 348-MACK  
9471 I-40 East Exit #76  
Amarillo, TX 79118  
8:00am-5:00pm, Mon.-Fri.  
*Parts & Service:*  
7:30am-10:00pm, Mon.-Fri.  
8:00am-4:00pm, Sat.

### BRIDGEPORT\*

#### (PARTS ONLY LOCATION)

(877) 729-MACK  
401B 13th Street  
Bridgeport, TX 76426  
7:30am-5:00pm, Mon.-Fri.

### CLEBURNE\*

#### (PARTS ONLY LOCATION)

(866) 411-MACK  
1744 N. Main St., Suite A  
Cleburne, TX 76031  
7:30am-5:00pm, Mon.-Fri.

### DALLAS (Irving Blvd.)

(877) 999-8092  
3611 Irving Boulevard  
Dallas, TX 75247  
7:30am-10:00pm, Mon.-Fri.  
*Parts & Service:*  
7:30am-4:00pm, Sat.

### DALLAS (I-20)

(877) 999-8078  
35680 LBJ Freeway  
Dallas, TX 75241  
7:30am-10:00pm, Mon.-Fri.  
*Parts & Service:*  
7:30am-4:00pm, Sat.

### FORT WORTH

(866) 350-MACK  
1200 N.E. Loop 820  
Fort Worth, TX 76106  
7:30am-Midnight, Mon.-Fri.  
*Parts & Service:*  
7:30am-4:00pm, Sat.

### LUBBOCK

(866) 358-MACK  
1125 E. Slaton Highway  
Lubbock, TX 79404  
7:30am-7:30pm, Mon.-Fri.  
*Parts Only:*  
8:00am-Noon, Sat.

### ODESSA

(866) 359-MACK  
2441 East I-20  
Odessa, TX 79766  
*Parts:*  
7:30am-5:30pm, Mon.-Fri.  
8:00am-Noon, Sat.  
*Service:*  
8:00am-5:00pm, Mon.-Fri.

### SAN ANGELO

(877) 861-2388  
829 North Bell St.  
San Angelo, TX 76903  
8:00am-5:00pm, Mon.-Fri.

### SAN ANTONIO (I-10)

(210) 661-4121  
4562 IH10 East  
San Antonio, TX 78219  
8:00am-5:00pm, Mon.-Fri.  
Sat. by call  
*Parts & Service:*  
7:00am-8:00pm, Mon.-Fri.  
8:00am-3:00pm, Sat.

### SAN ANTONIO (I-35)

(210) 646-6225  
11215 N. Weidner Rd.  
San Antonio, TX 78233  
7:00am-5:00pm, Mon.-Fri.

### TYE (ABILENE)

(866) 341-MACK  
1002 S. Access Rd.  
(Exit 278 I-20)  
Tye, TX 79563  
7:30am-5:30pm, Mon.-Fri.

### WICHITA FALLS

(866) 369-MACK  
4520 N. W. Freeway  
Wichita Falls, TX 76306  
7:30am-5:30pm, Mon.-Fri.

## KANSAS

### GARDEN CITY\*

#### (PARTS & SERVICE LOCATION)

(877) 999-1449  
2509 N Taylor Ave  
Garden City, KS 67846  
*Service:*  
8:00am-5:00pm, Mon.-Fri.  
*Parts:*  
7:30am-5:30pm, Mon.-Fri.  
Closed Sat. and Sun.

### HAYS

(888) 629-MACK  
2101 Commerce Parkway  
Hays, KS 67601  
7:30am-5:00pm, Mon.-Fri.

### SALINA

(785) 714-4159  
1645 Copper Court  
Salina, KS 67401  
7:30am-5:00pm, Mon.-Fri.

### WICHITA

(877) 246-1671  
4343 South West Street  
Wichita, KS 67217  
7:30am-5:00pm Mon.-Fri.

## NEW MEXICO

### ALBUQUERQUE

(866) 370-MACK  
8101 Daytona Rd. NW  
Albuquerque, NM 87121  
8:00am-5:00pm, Mon.-Fri.  
*Parts & Service:*  
7:00am-7:00pm, Mon.-Fri.  
8:00am-4:00pm, Sat.

### FARMINGTON

(866) 349-MACK  
4050 Bloomfield Hwy  
Farmington, NM 87401  
7:30am-5:00pm, Mon.-Fri.  
*Parts & Service:*  
Sat. and Sun. By Call

### HOBBS

(866) 351-MACK  
2121 NW County Rd  
Hobbs, NM 88240  
*Sales:*  
8:00am-5:00pm, Mon.-Fri.  
*Parts and Service*  
7:00am-5:00pm, Mon.-Fri.

## OKLAHOMA

### ARDMORE\*

#### (PARTS ONLY LOCATION)

(888) 999-9316  
3312 Prairie Valley Rd.  
Ardmore, OK 73401  
8:00am-5:00pm, Mon-Fri  
Closed Sat.

### BIG CABIN

(918) 783-5159  
32046 S Hwy 69  
Big Cabin, OK 74332  
*Parts & Service:*  
8:00am-5:00pm, Mon.-Fri.  
8:00am-Noon, Sat.

### ENID

(800) 375-6225  
5913 E. Owen K. Garriott Rd.  
Enid, OK 73701  
8:00am-5:00pm, Mon.-Fri.

### OKLAHOMA CITY

(866) 360-MACK  
10120 West Reno Avenue  
Oklahoma City, OK 73127  
8:00am-5:00pm, Mon.-Fri.  
*Parts & Service:*  
7:00am-7:00pm, Mon.-Fri.  
7:30am-4:00pm, Sat.

### TULSA

(877) 493-6025  
5301 W. 60th  
Tulsa, OK 74107  
7:00am-10:00pm, Mon.-Fri.  
*Parts & Service:*  
7:00am-3:30pm, Sat.

## COLORADO

### DENVER (COMMERCE CITY)

(866) 310-6225  
7626 Brighton Road  
Commerce City, CO 80022  
8:00am-5:00pm, Mon.-Fri.;  
8:00am-Noon, Sat.  
*Parts & Service:*  
7:00am-10:00pm, Mon.-Fri.;  
7:00am-3:30pm, Sat.

### FOUNTAIN

(877) 589-6256  
6145 Champlin Drive  
Fountain, CO 80817  
7:00am-7:00pm, Mon.-Fri.

### GREELEY\*

#### (PARTS ONLY LOCATION)

(877) 455-3494  
600 26th St.  
Garden City, CO 80631  
7:30am-5:00pm, Mon.-Fri.

## LOUISIANA

### BALL

#### (TRAILER REPAIR SHOP)

(318) 641-0290  
4303 Pardue Rd,  
Ball, LA 71405  
8:00am-5:00pm, Mon.-Fri.

### PINEVILLE

(318) 640-2098  
4170 Pardue Rd  
Pineville, LA 71360  
8:00am-5:00pm, Mon.-Fri.

### MONROE

(877) 801-2982  
6500 Frontage Rd.  
Monroe, LA 71202  
7:30am-5:30pm, Mon.-Fri.  
*Parts Only:*  
8:00am-Noon, Sat.

### SHREVEPORT

(877) 369-0906  
7600 Greenwood Road  
Shreveport, LA 71119  
7:30am-5:00pm, Mon.-Fri.  
By appointment, Sat.  
*Parts & Service:*  
7:30am-7:30pm, Mon.-Fri.  
8:00am-4:00pm, Sat.

## ARKANSAS

### LOWELL

(479) 770-6040  
324 S. Bloomington St.  
Lowell, AR 72745  
7:00am-7:00pm, Mon.-Fri.  
8:00am-12:00pm, Sat.

### POTTSVILLE

(479) 498-8260  
620 Mountain Base Rd.  
Pottsville, AR 72858  
7:30am-7:00pm, Mon.-Fri.  
7:30am-12:00pm, Sat.

### VAN BUREN

(479) 498-8260  
209 Rena Rd.  
Van Buren, AR 72956  
7:00am-7:00pm, Mon.-Fri.  
8:00am-12:00pm, Sat.

## WASHINGTON

### ELLENSBURG

(509) 962-8881  
1711 US Highway 97  
Ellensburg, WA 98926  
*Sales:*  
8:00am - 5:00pm, Mon.-Fri.  
*Parts & Service:*  
7:00am - 7:00pm, Mon.-Fri.  
*Parts only:*  
Sat. 8:00am - 12:00pm  
Service by call on Sat.

### WENATCHEE

(509) 665-8383  
1231 S. Wenatchee Ave.  
Wenatchee, WA 98801  
*Parts & Service:*  
7:00am-5:00pm, Mon.-Fri.  
Closed Saturday & Sunday

### YAKIMA

(509) 575-8888  
2003 E Viola Ave,  
Yakima, WA 98901  
PO Box 10828  
Yakima, WA 98909  
8:00am-5:00pm, Mon.-Fri.  
*Lease & Rent:*  
8:00am-5:00pm, Mon.-Fri.  
*Parts & Service:*  
7:00am-10:00pm, Mon.-Fri.  
8:00am-5:00pm, Sat.

9471 I-40 East Exit #76  
Amarillo, TX 79118

Change Service Requested

# Bruckner's

TRUCK &  
EQUIPMENT

## STAY FROSTY



*Let us check your truck for winterization to ensure you're ready for the elements!*

WINTERIZING SPECIAL

**\$165<sup>00</sup>**

- ✓ Antifreeze level checked
- ✓ Pressure check system
- ✓ Inspection of all hoses and belts
- ✓ Top off antifreeze (up to one gallon coolant)
- ✓ Inspect pH balance of cooling system
- ✓ Check freeze protection

